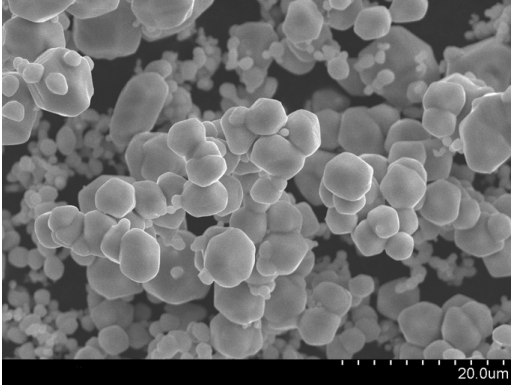


**MOLYBDENUM METAL POWDER**

**DESCRIPTION**



SEM Image – Molybdenum Metal Powder

Climax’s MM grade molybdenum metal powder is produced using a proprietary reduction and blending process that yields a product having a fine primary particle size and a spherical morphology attained without the use of milling.

The resulting high purity powder is used in the direct fabrication of metal parts via conventional powder metallurgy consolidation practices, as well in the production of alloys via metal blending or mechanical alloys.

**CHEMICAL PROPERTIES**

<b>MM</b>	
<b>Purity:</b> Molybdenum (Mo)*	99.95% min
<b>Element</b>	<b>Maximum (ppm)</b>
Oxygen (O)	1000
Nitrogen (N)	100
Carbon (C)	50
Tungsten (W)	250
Iron (Fe)	50
Nickel (Ni)	50
Chrome (Cr)	50
Silicon (Si)	50

\*Purity determined by subtraction, excluding gases

**PHYSICAL PROPERTIES**

<b>Bulk Density:</b>	1.2-1.8 g/cc
<b>Tap Density:</b>	2.5-3.6 g/cc
<b>Particle Size Distribution:</b>	
-100 / +200 mesh	< 5%
-200 mesh	Balance

**STANDARD PACKAGING**

< 5kg	Plastic (PE) bottle	All MM molybdenum metal powders are packed in poly lined containers.
~ 20kg	steel pail	
> 100kg	steel drum	

**MSDS REQUIREMENTS**

A copy of the material safety data sheet (MSDS) is available upon request.

PDS MM REV03