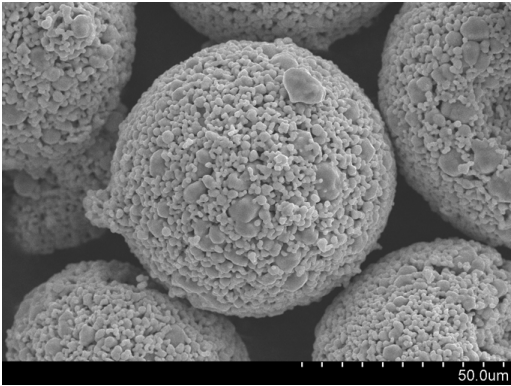


MOLYBDENUM SPRAY DRY AGGLOMERATED POWDER

DESCRIPTION



SEM Image – Mo Spray Dry Powder

Spray dry agglomerated powders are used in applications such as thermal spraying, where flowability and mass metal flow control are critical. Climax’s spray dry agglomerated powders have a spherical morphology and a narrow particle size distribution to maximize flow characteristics. In addition, Climax’s PM-1 and TM-1 powder particles have a high relative density which allows users to maximize their process throughput. Climax’s TM-1 grade of powder is manufactured to exceptionally high purity standards for applications where control of trace metal impurities and gaseous elements are imperative to end-use functionality.

CHEMICAL PROPERTIES

	PM-1	TM-1
Purity:		
Molybdenum (Mo)*	99.9% min	99.95% min
Element	Maximum (ppm)	Maximum (ppm)
Oxygen (O)	2000	1000
Nitrogen (N)	100	50
Carbon (C)	100	75
Tungsten (W)	250	250
Iron (Fe)	100	65
Nickel (Ni)	100	50
Chrome (Cr)	100	50
Silicon (Si)	100	50

*Purity determined by subtraction, excluding gases

PHYSICAL PROPERTIES

	PM-1	TM-1
Bulk Density:	2.5-3.5 g/cc	2.5-3.5 g/cc
Hall Flow (time per 50g):	< 45 s	< 30 s
Particle Size Distribution:		
+200 mesh	< 20%	< 15%
-200 / +325 mesh	Balance	Balance
-325 mesh	< 30%	< 20%

STANDARD PACKAGING

< 5 kg	Plastic (PE) bottle	All PM-1 and TM-1 molybdenum spray dry agglomerated powders are packed in argon backfilled, sealed mylar bags.
~ 20kg	steel pail	
> 100kg	steel drum	

MSDS REQUIREMENTS

A copy of the material safety data sheet (MSDS) is available upon request.

PDS PMTM REV02